

Final Cut Learning materials on line:

http://www.kenstone.net/fcp_homepage/fcp_homepage_index.html<http://multimedia.journalism.berkeley.edu/tutorials/finalcut/>

FINAL CUT PRO INDUCTION RECAP:

This introduction is aimed to give you simple and fast tutorial on how to digitally edit the footage you have shot. It will give you a basic knowledge you need to produce your video piece.

To open Final Cut – single click the Final Cut Pro Icon at the bottom of the screen in the dock. (If you couldn't find a short code icon of F.C. in a dock, alternatively you can open software from Application folder. (Macintosh HD – Applications – Final Cut Pro)

If there is already project/projects open in Final Cut and it is not yours – go to the menu bar and click **close project**.

1. Settings the Preferences:

YOU MUST ALWAYS SET PREFERENCES EVERY TIME YOU USE THE COMPUTER. IF YOU DO NOT YOUR WORK IN PROGRESS MAY BE DELETED!

In the Menu bar at the top go to Final Cut Pro and on a scroll down menu choose **SYSTEM SETTINGS**. This is setting for directory/folder where all your footage, renders and projects will be saved. It is very important that you follow steps below to set **Scratch Disks** settings:

Click on the first highlighted **SET** button, then navigate to **Students Documents HD** – create a new folder (Click on **New Folder** at the bottom left of this screen), type your name, then press return.

Click Choose.

Next click on the **Set** button that's next to **Waveform cache**. Go to the **Student HD** again, find your folder and click **Choose**.

Repeat this step for the **Thumbnail Cache** and **Autosave Vault**. Then click **OK**.

2. Capturing your footage from a video tape:

You need to transfer your footage that is on the tape onto computer, this is called **Capturing**.

You will capture your footage from the capture device (camera or deck) so make sure it is switched on and connected via the Firewire cable.

In the Menu bar go to **File**, scroll down to **Log and Capture**:

Using the controls on the screen below the image, you need to find the first clip you want to capture. Once you have found the one you want, rewind the tape to about 10 sec before the bit you want to capture, use the timecode at the top to remember where to start. Next to where it says **Description**, give your clip a name.

Click **Play** first, then on the right hand side click **Now**. Final Cut captures footage in real time. In order to stop Capturing – press **Escape** on your keyboard.

3. Editing Your Piece:

You now want to give your project a name and save it in your folder.

Click on the Project window (bottom left) **Go to File > Save Project As** and again find 'Your' Folder, give the project a name and click **Ok**.

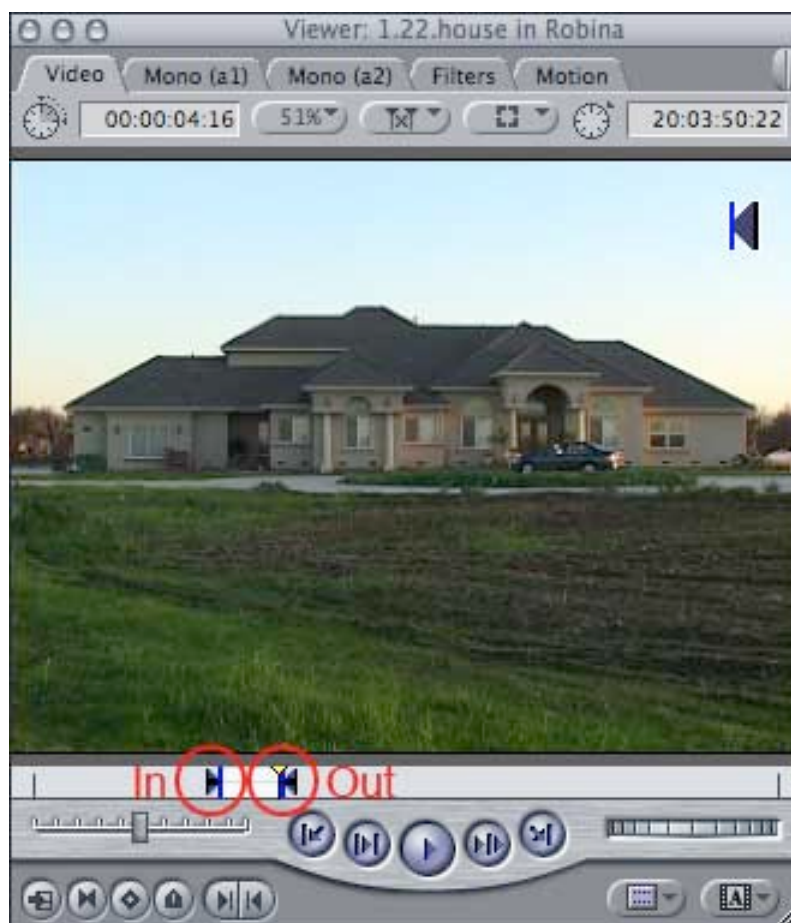
Final Cut Pro works on a drag and drop process so to move clips from the **Clip Viewer** (on the left) to the **Canvas or Timeline viewer** (on the right) you hold down the mouse button on your chosen clip on the left and pull it across to the screen on the right.

For your first clip:

Close the capture window, after you captured your footage (top left tiny red circle)

Editing Clips in the Viewer with In and Out Points:

You can edit clips in the Viewer so you don't have to load your entire clip into the Timeline when you want to create your movie. You can choose a smaller selection to add by double clicking on the clip in the Browser so it displays in the Viewer. Then start playing the clip.



Press the **I Key** (for IN) at the desired point where you want your clip to start playing. Then hit the **O Key** (for OUT) at the point you want your clip to end. You will see arrows appear in the window at the points you pressed the I and O keys. These points can be moved later by clicking and dragging on the arrows. When you have the clip set with in and out points you want, you can click on the clip in the Viewer and drag the clip into the Timeline or Drag it across to the Timeline Viewer and drop it in the **Insert option box that will appear as you drag**. Only the portion of the clip where you set your in and out points will be placed in the Timeline.

Now repeat this with few more clips.

You can move an audio into the Timeline by double clicking on it in the Browser, which then will display the audio clip in the Viewer window to the left. If it's an audio-only clip that you want to drag to timeline, you need to click on the tiny hand in the upper right of the Viewer above the waveform, and then hold down your mouse button and drag the audio clip down into the Timeline.

You now have a sequence of clips with straight cuts.

The most common form of edit outside of the straight cut is the **dissolve** or **cross fade**. We will now do this between two of your clips.

Double click your next clip in the project browser, set the **in** and **out** points as before.

Click and drag this clip directly into the timeline at the end after the last clip. You will find it sticks to the end, this is called snapping (n – short cut).

Single click the clip at the end and then click and drag it up and drop it in what will become Video Channel 2 or V2. Then drag it to the left, a small yellow

Splitting or Deleting Portions of a Clip with the Razor Blade Tool:

If you want to split a video or audio clip in two or remove a segment of a clip (such as eliminating a sound gap in your audio), you can use the **Razor Blade Tool** to slice out the segment of the track.



It's called a razor blade because in the traditional film editing process a tape was literally sliced with a razor blade to remove unwanted pieces of the film or rearrange segments of a film.

To do these cuts in Final Cut Pro, in the **Tool Palette** click on the **Razor Blade** tool, which is an icon that looks like a little razor blade (or press the **B Key** for "blade" on your keyboard). Your cursor will change to a small razor icon.

With the razor blade tool selected you apply the cut by clicking on a clip at the point in the Timeline where you want to make the cut. That will split the clip in two. If you click at another point in the clip and make a second cut, you create a segment of a clip between the two cuts that you then can remove.

Adding Handles to Allow Transitions:

Before you add a transition between clips, such as a dissolve to make your first clip gradually dissolve into the second, you need to make sure you have enough extra material or "handles" on your clips so Final Cut Pro has excess video to work with when it applies the transition.

For example, let's say you selected two clips in the Browser and then, without editing them (such as creating In or Out points), dragged them to the Timeline and put them next to each other on the same track.

If you then tried to apply a transition between the two clips, Final Cut Pro would reject it. That's because there's no extra video to use for the transition, in which a portion of one clip overlaps with part of the other clip.

The only way Final Cut Pro could apply the transition to these two unedited clips would be to try to somehow move them on the Timeline so they overlapped. But that would shorten the movie and disrupt the timing of audio on any adjacent track.

There's just no room for a transition to be applied to unedited clips.

This means you need to make sure before you add a transition that the first clip has enough extra, unused material at its end, and the second clip has enough extra, unused material at its beginning so Final Cut Pro can apply the transition.

Thus if you want a one-second transition between two clips, you should have half a second or more of unused material at the end of the first clip, and another half second or more of unused material at the beginning of the second clip.

Adding the Handles for Transitions:

If you know you want to apply a transition between two clips, you should add [In and Out points](#) to the clips in the Viewer before dragging the clips to the Timeline. Use the In and Out points to create enough extra, unused video for the duration of the transition you want to apply.

If your clips are already in Timeline and Final Cut Pro is rejecting a transition between them, you'll need to double click on the first clip in the Timeline to display it in the Viewer. Then check to see if there's an Out point near the end of the clip and enough excess material after the Out point to accommodate half the transition. If not, then you'll need to drag the Out point to the left until the unused portion of the clip is long enough to accommodate half of the transition you're going to apply.

Repeat this procedure with the second clip in the Timeline. Double click on it to display it in the Viewer. Then check to see if there's an In point near the beginning of the clip and enough excess material before the In point to accommodate half the transition. If not, then you'll need to drag the In point to the right until the unused portion of the clip is long enough to accommodate half of the transition you're going to apply.

After you've edited the clips, you'll need to drag the now shortened clips back next to each other in the Timeline (editing the clips with the In and Out points in the Viewer, shortens them and creates a gap between the two clips in the Timeline).

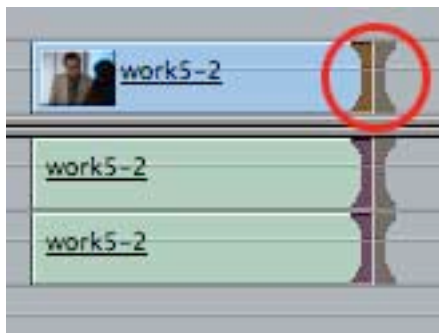
Now you'll be able to apply your transition to the clips, because you've marked out enough excess video in your clips to be used in the transition.

Note: if you're editing clips that are in the Timeline, be sure to have [linking and snapping](#) turned on, so any audio associated with the clips remains in synch with the video and so the clips will snap together when you move them

Adding Transitions in the End or Between Clips:

To add a transition, such as a dissolve so the first clip gradually dissolves into the second, first click on the vertical line between two clips in the Timeline.

You should see a brown area, like a thick I appear between the clips.

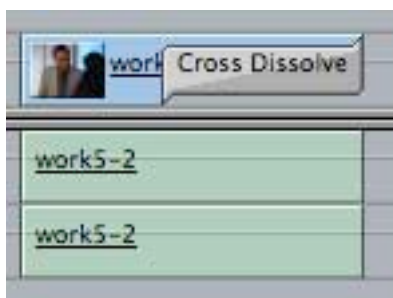


Now select a transition in the Final Cut Pro menu at the top by clicking on:

Effects > Video Transitions >

Then click on a submenu such as **Dissolves**. Finally click on the file for the transition you want to apply.

You should see the transition appear as a greyish area between the two clips in your Timeline.



You also can make changes in your transition like duration by double clicking on the transition in the Timeline. In the box that appears in the Viewer area at the top of your screen, just type a new number into the time box, which usually is set at a 1 second duration by default. If you don't like the transition you've created, you can click on it and press the **delete key** to remove it.

Effects

Now we're going to apply an effect to one of the clips. Final Cut has many effects options but we are going to use one called Brightness and Contrast:

Select a clip in the Timeline Set the timeline Playhead so it runs through the clip. Double click on it to highlight the whole clip (the same image will appear on both viewing screens). In the menu bar go to **Effects > Video Filters > Image Control > Brightness and Contrast**.

Now to adjust the levels of **Brightness and Contrast** you must look up at the clip viewer (the left hand screen) and click the **Filters** tab at the top. In the window that appears are two slider controls, one for brightness and one for contrast. Have a play with them by clicking and dragging and you will see the results in the right hand screen. When you happy click back to the video tab.

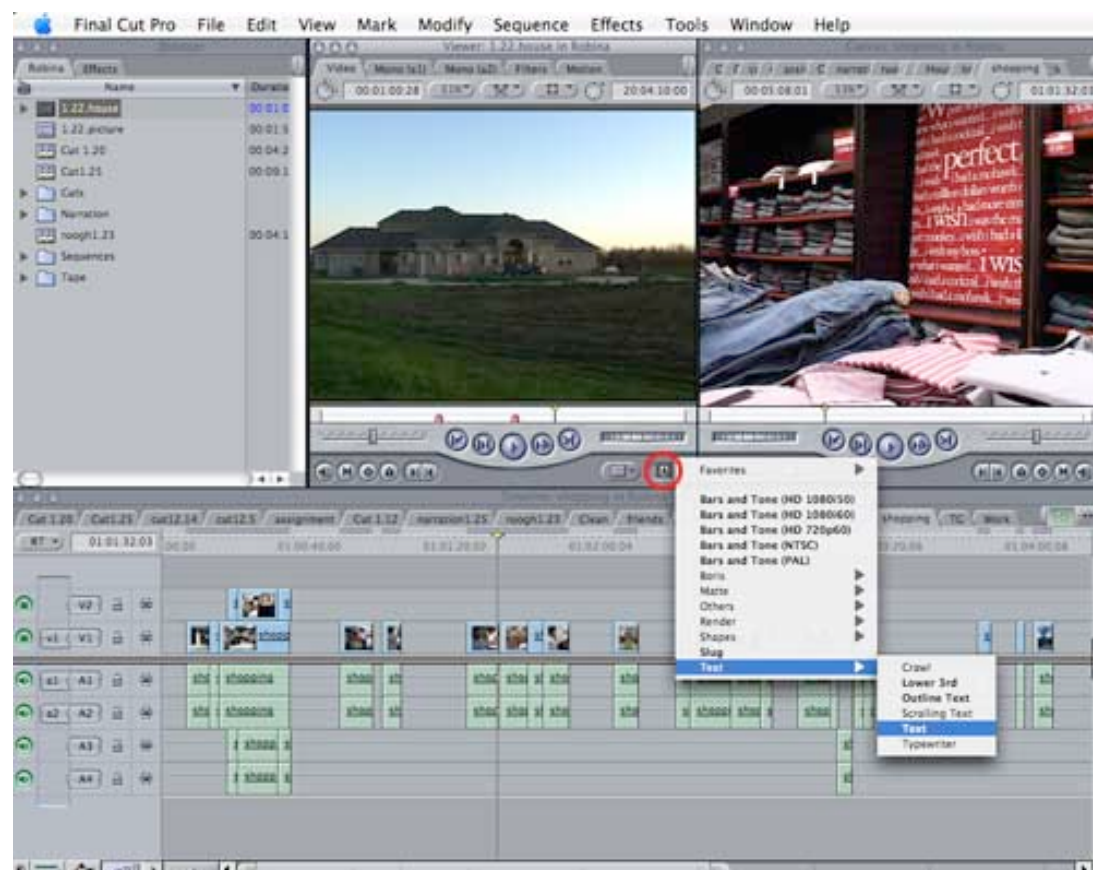
If any of the effects appear '**Unrendered**' you will have to go to **Sequence** and either **render selection** or **render all**. This will take a bit of time depending on the length of your clips.

Have a play with the different effects. They all function in the same way as this first one.

Adding Titles and Text to Clips

You can add a title or some text to a clip, such as the name of a person who appears in the clip.

To do this, at the bottom of the Viewer click on the button with a large **A** on it, which is the text button.



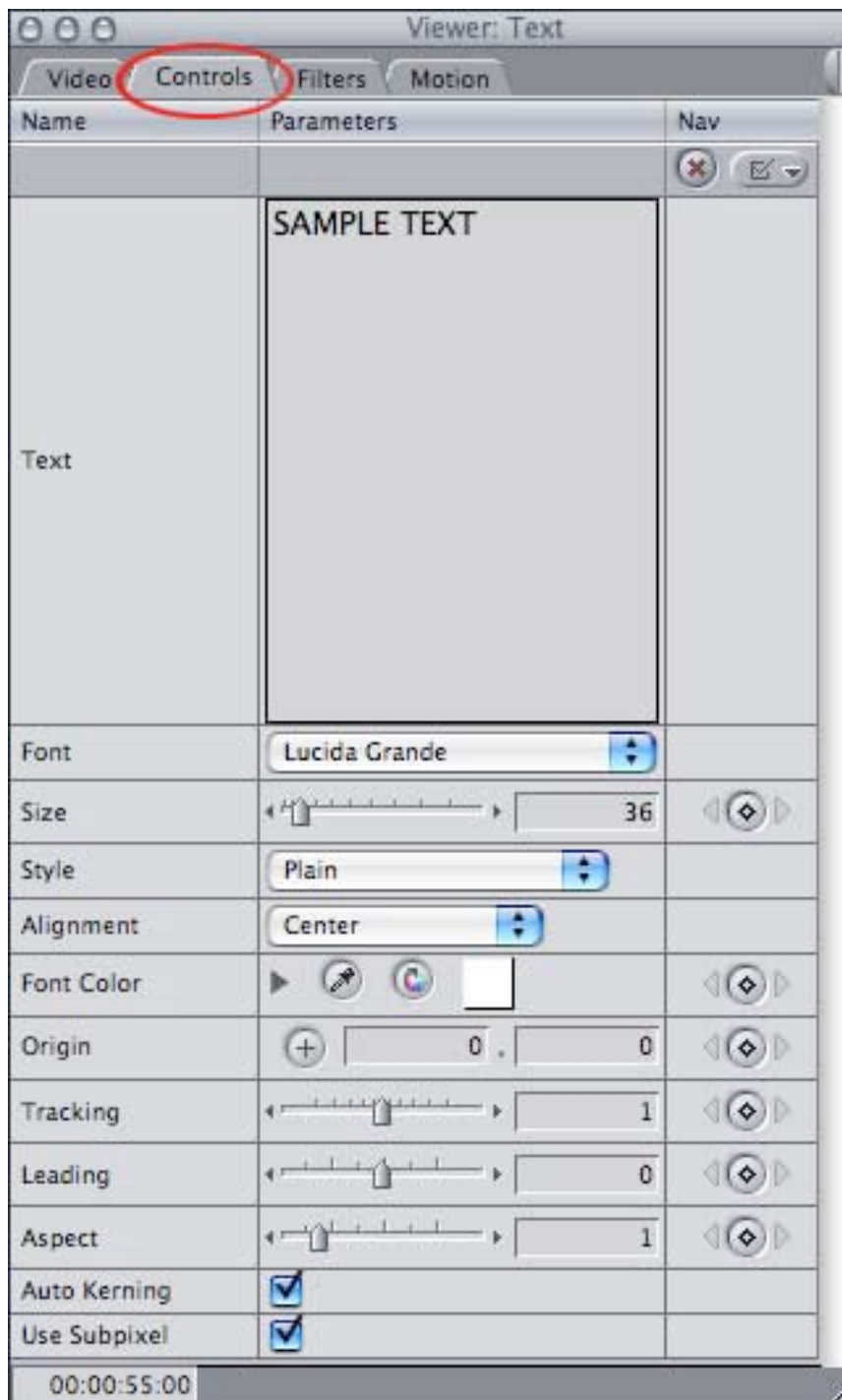
Hold down your mouse button and in the drop-down menu select:

Text...Text

Then release your mouse button.

In the Viewer area will appear a screen with sample text in it.

To change the sample text, click on the tab entry at the top labelled: **Controls**



A box will appear on your screen in the Viewer area.
You change the text of the title by just typing new words into the box.

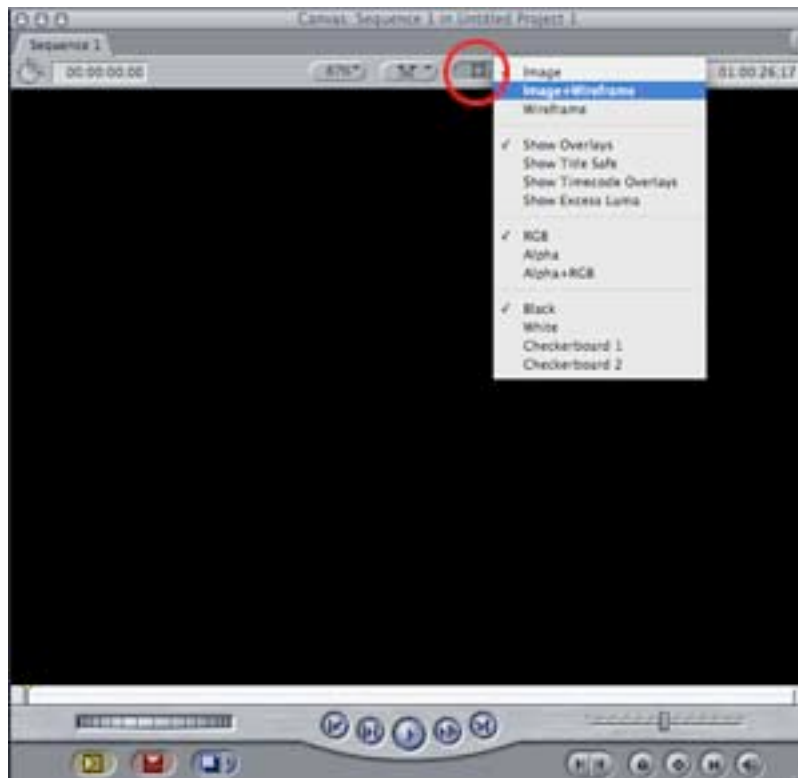
Now to place the text on your Timeline, click on the **Video** tab.
Then move your Playhead on the Timeline to the point in a clip where you want your text to begin.
Now click in the Viewer on the text you created, hold down your mouse button, drag it down onto the Timeline just above the clip and at the point of the Playhead, and release it. The text will be placed on a new track above your clip.

Positioning the Text

You also can change the **position** of the text - moving it anywhere you want on the screen - by creating a **wireframe** to drag the title to different points on the screen. To do that, double click on the text you've created in the Timeline, to display it in the Viewer and in the Canvas.

in the Canvas area to the right, click on the tiny box toward the top right that has a hole in it.

In the drop-down menu that appears, select: **Image+Wireframe**



A wireframe will appear over your title, with an image of the clip underneath. Click on the point in the middle where the lines intersect, and you can drag the title anywhere on the screen to change its position.

Exporting Still Frames as Pictures

You can export a single frame from a clip in Final Cut Pro, to use as a picture on a Web site.

To do this, select a clip in the **Browser** or the **Timeline** to display it in the **Viewer**, and then move the Playhead to the single frame you want to export.

In the menu at the top select:

File...Export...Using QuickTime Conversion

In box that appears, change the **Format** setting to **Still Image**.

Click on the **Options** button and select a format for the picture, such as **JPEG**, and click on **OK**.

Now pick a destination folder where you want to store the picture, rename the picture, and click on **Save**.

The photo will be saved into the folder you selected.

Create a single frame to put in your Timeline

You similarly can create a "freeze frame" for the **Timeline** that will display as a still image that lasts for several seconds in your movie.

To do this, select a clip in the **Browser** or the **Timeline** to display it in the **Viewer**, and then move the Playhead to the single frame you want for your movie.

In the menu at the top, select:

Modify...Make Freeze Frame

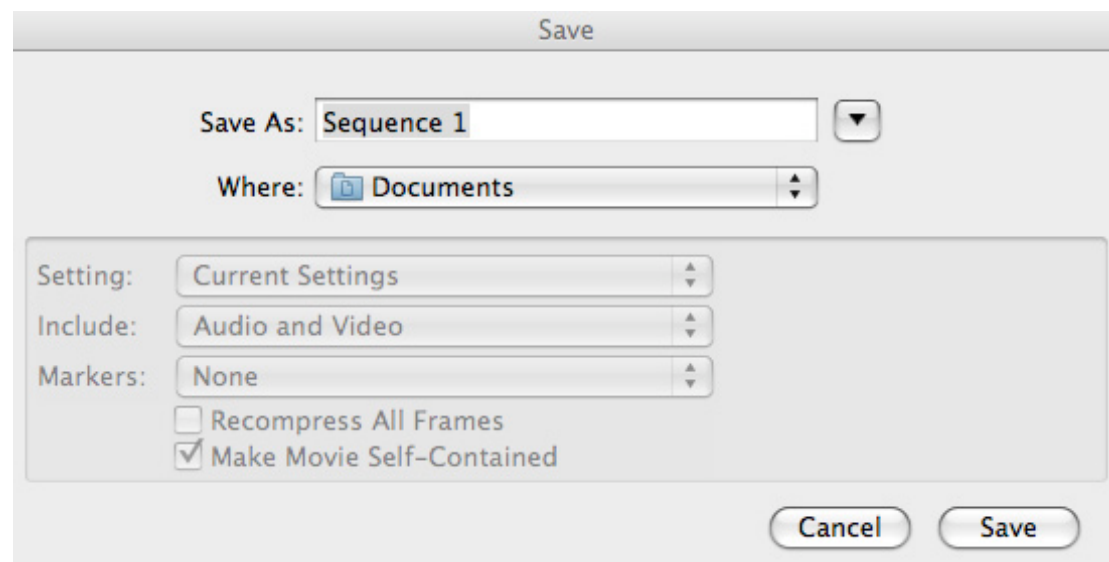
Click on the frame in the **Viewer** and drag it to the point you want it to appear in the **Timeline**.

You then can grab the edge of the single-frame image to shorten or lengthen the duration of the image in your movie.

Finishing Off

When your movie is complete, you should export a **Master Quality Quick Time Movie** and back it up on your **personal External Hard Drive** and/or burn it as **Quick Time Movie Data File** onto **DVD**.

To export Quick Time Movie Master Quality go to **File > Export > Quick Time Movie**



Save as > Name of your movie

Where > Student Documents > Student Folder (or alternatively you can export file to your personal External Hard Drive)

Settings > Current Settings (corresponds to your project sequence settings and for master quality should stay same, unchanged)

Include > Audio and Video (choose only video if you do not have sound in your movie)

Make Movie Self-Contained option has to be selected.